

CERTIFICATE OF LOCATION OF GOVERNMENT CORNER

NORTHEAST Corner of Section 11, Township 105 N, Range 39 W, 5th P.M.

STATE OF MINNESOTA, County of MURRAY

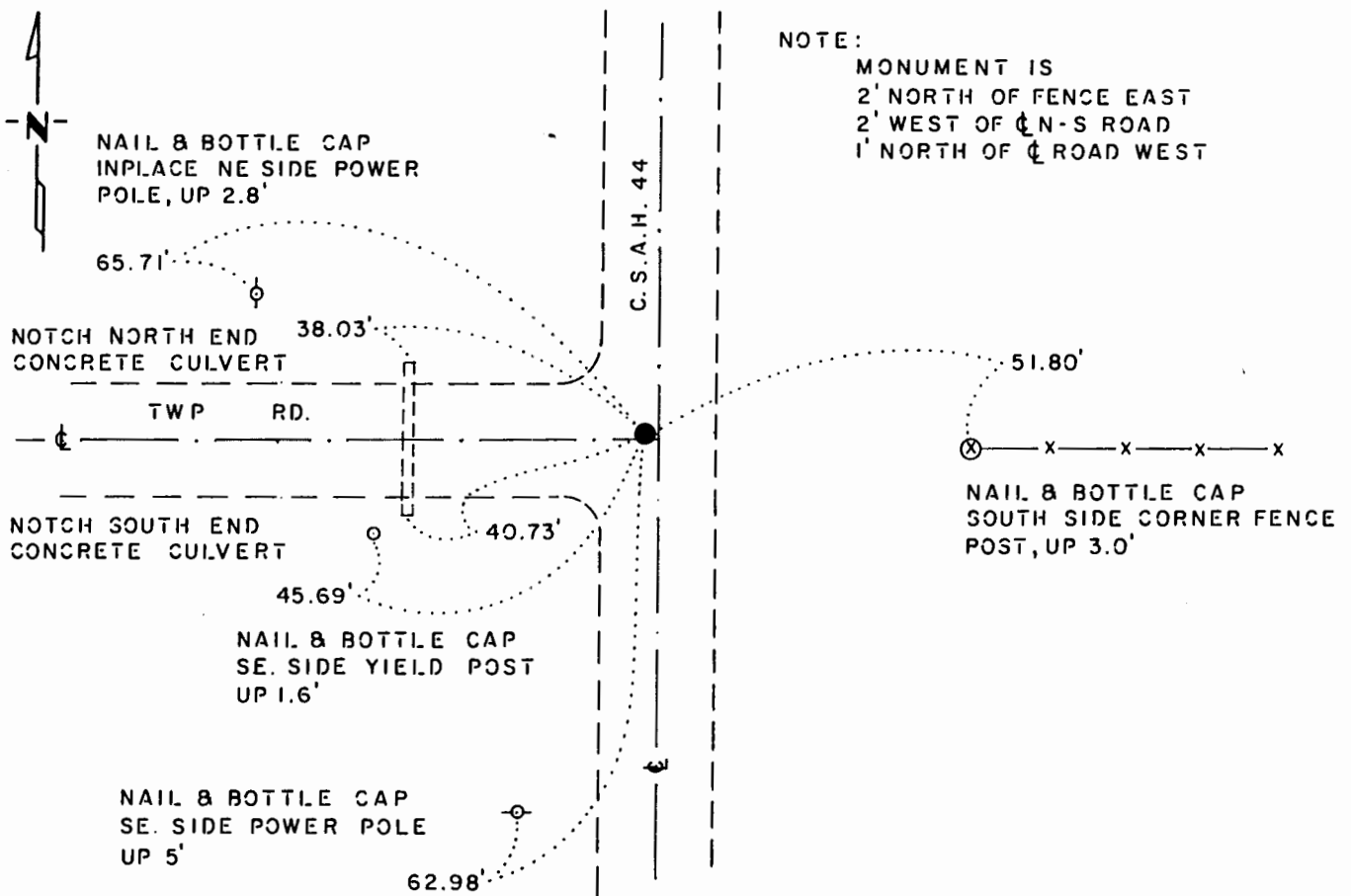
At the corner location shown on the sketch:

On 5-6-76 found a 6" x 6" CONCRETE MONUMENT, DOWN 0.6'
DATE

left monument as found, lowered monument, removed monument (explain)

On 5-6-76 placed a 5/8" x 4" BOLT OVER CONCRETE MONUMENT
DATE

SKETCH OF REFERENCE TIES



Statement of evidence relative to this corner location is on back of page.

J. B. M. 3-21-85
6-158

I hereby certify that this document and the data contained herein was prepared by me or under my direct supervision.

Bruce W. Shepard 12/20/85
SIGNATURE DATE

Registration No. 17003

- Land Surveyor, Professional Engineer
 County Surveyor, County Engineer

OFFICE OF THE COUNTY RECORDER

County of _____

I hereby certify that this document was filed in the Co. Recorders office at _____ M. on the _____ day of _____ A.D., 19 _____

County Recorder _____

By _____, Deputy

DOCUMENT NO. _____

Northeast Corner Section 11, Township .105 North, Range 39 West

This corner was originally established by the U. S. General Land Office survey in 1861. The government notes show:

set post, drove charred stake, made mound with trench and pits as per instructions

In October 1975, the DNR Bureau of Engineering contacted the following for corner information:

Murray County Offices of the Recorder and Highway Engineer
Sioux Engineering of Windom

The following information was obtained from the County Recorder's Office: Surveyor's Record Book A on Page 185 contains a survey done in 1902, by J. W. Woolstencraft. Survey shows that a 2" by 2" by 24" oak stake was found at corner. A blue stone 10" by 12" by 14" was set to mark corner.

A Surveyor's Record Book contains a survey done in 1936, surveyor not indicated. Survey shows that a stone was found at corner. A concrete stone was set to mark corner and the following ties were taken:

edge of concrete post, southwest, 47.0 feet
tack in blazed tree, northwest, 47.4 feet
reference point, steel corner post, east, 32.4 feet

A Surveyor's Record Book contains a survey done by F. A. March date not indicated. Survey shows a stone at corner with the following ties:

reference point-northeast corner of concrete post, southwest, 47.0 feet
reference point-tack in blazed willow tree, northwest, 45.2 feet

The following information was obtained from the County Highway Engineer's Office:

A book of field notes dated 1967 show a concrete monument in place at corner with an iron pipe along side of it.

In May 1976, the DNR Bureau of Engineering traversed to the area of the corner and found a 6" by 6" concrete monument. Searched for but did not find record ties.

Accept the concrete monument as the location of the corner.

Traverse information is available from the DNR Bureau of Engineering.

76hab